

Corporate Concepts International, Inc



1999 Challenger 604

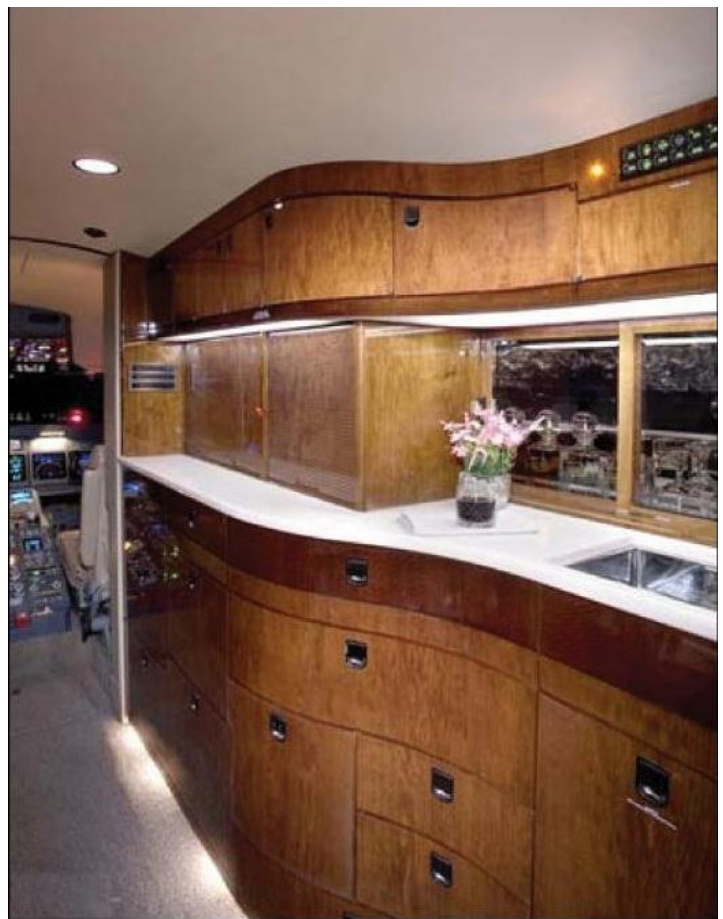
Corporate Concepts International, Inc is pleased to exclusively offer this Challenger 604. The Challenger 604 is one of the most proven designs in business aviation and this aircraft is attractively configured to transport ten passengers in comfort and elegance. With a range of approximately 3,800 miles and the increased gross takeoff weight the aircraft can easily be used for domestic or international flights. The Challenger 604 offers the same size, comfort and range as the Challenger 605 at a substantially discounted price and ready to go into immediate service for your aviation needs. Contact us today for further information or to make arrangements for a personal showing of this exceptional value Challenger 604.



Interior aft view

This Challenger 604 offers a ten passenger executive interior configured with a four-place club grouping with fold-out tables in the forward cabin, a four-place divan opposite a two-place opposite a two-place club group with fold-out table. A forward “S” shaped galley is equipped with a microwave oven, high temp oven, coffee maker and wine storage along with an extended aft lavatory completes the VIP executive interior. The passenger entertainment features:

- ✓ Monitors on forward and aft bulkheads
- ✓ Airshow 400 system
- ✓ Video player





Avionics – Collins ProLine 4

Dual Collins VHF-422B VHF Comm
 Flight Data Recorder (FDR)
 Triple Collins FMS-6000 FMS
 Dual Litton 101 IRS's
 Weather Radar Collins RTA-854
 Dual Collins GPS receivers
 Artex ELT 406MHz
 Dual Collins ADF-462 receivers

Electronic Flight Instrument System (EFIS)
 Dual Collins HF comm w/ SELCAL
 Dual Collins VIR-432 Nav receivers
 Dual Collins DME422 transceivers
 Collins TCAS II w/ Chg. 7 software
 Honeywell EGPWS system
 Cockpit Voice Recorder
 Dual Collins TDR-94D transponders

Aircraft Details –

Year:	1999	Max. takeoff weight	48,200 lbs
Acft and eng total time:	3,952.4 hrs	Landings / Cycles	2,414

Additional Features –

- ✓ Aircraft and engines enrolled on Smart Parts Plus
- ✓ APU enrolled in Honeywell MSP
- ✓ Provisions for SATCOM system
- ✓ JAR Ops 1 (EASA) compliant
- ✓ 48 month / 400 hour inspection completed in December 2011



Contact us today for more information or to arrange for a private showing of this exceptional aircraft:

Dennis Blackburn
Phone +1.832.647.7581
blackburn@flycci.com

Larry Wright
Phone +1.704.906.3755
LWright65@gmail.com



CCI has obtained the aircraft specifications and information from the aircraft owner and it is believed this information is reasonably accurate. The information and specifications are offered for marketing and presentation purposes only. All information and all specifications regarding the aircraft is the sole responsibility of the purchaser or lessee to verify upon their inspection and to satisfy themselves as to the reliability and accuracy of all information. CCI makes no representations or guarantees as to the information, specifications, qualifications or certification for any use or performance of the aircraft